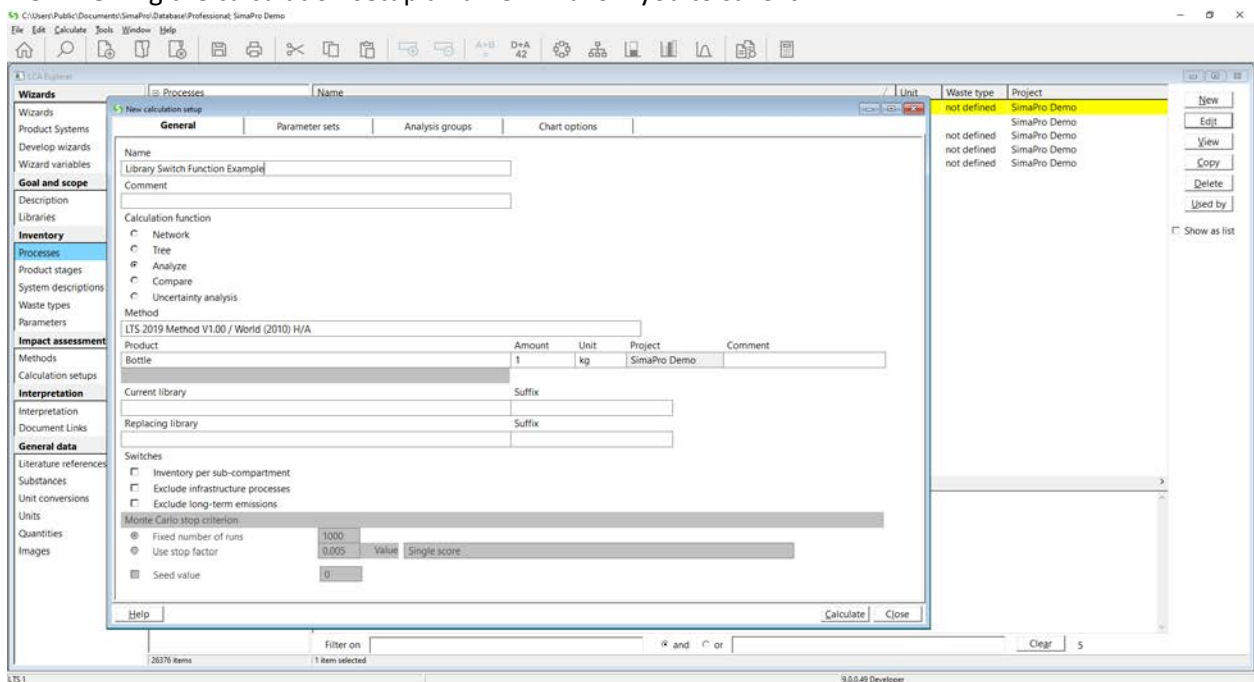


## Library switch function

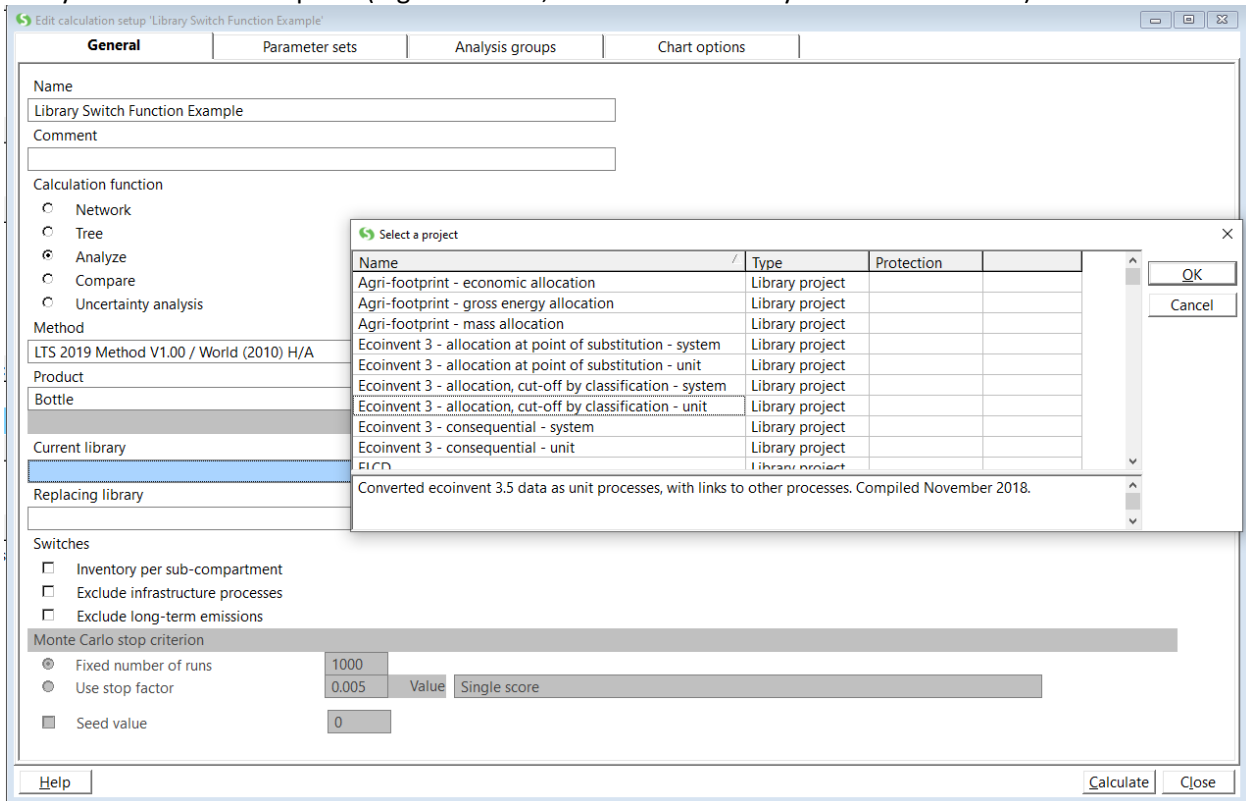
You can use the library switch function to switch between Ecoinvent unit and system libraries or switch between Ecoinvent system models (e.g. Ecoinvent, allocation cut-off by classification for Ecoinvent, allocation at point of substitution).

1. In the calculation set-up window, select the method and process you would like to analyze.

**NOTE:** Giving the calculation setup a name will allow you to save it.



- Then, double click below “Current library” and select the library that you currently have in your process that you would like to replace (e.g. Ecoinvent, allocation cut-off by classification - unit).

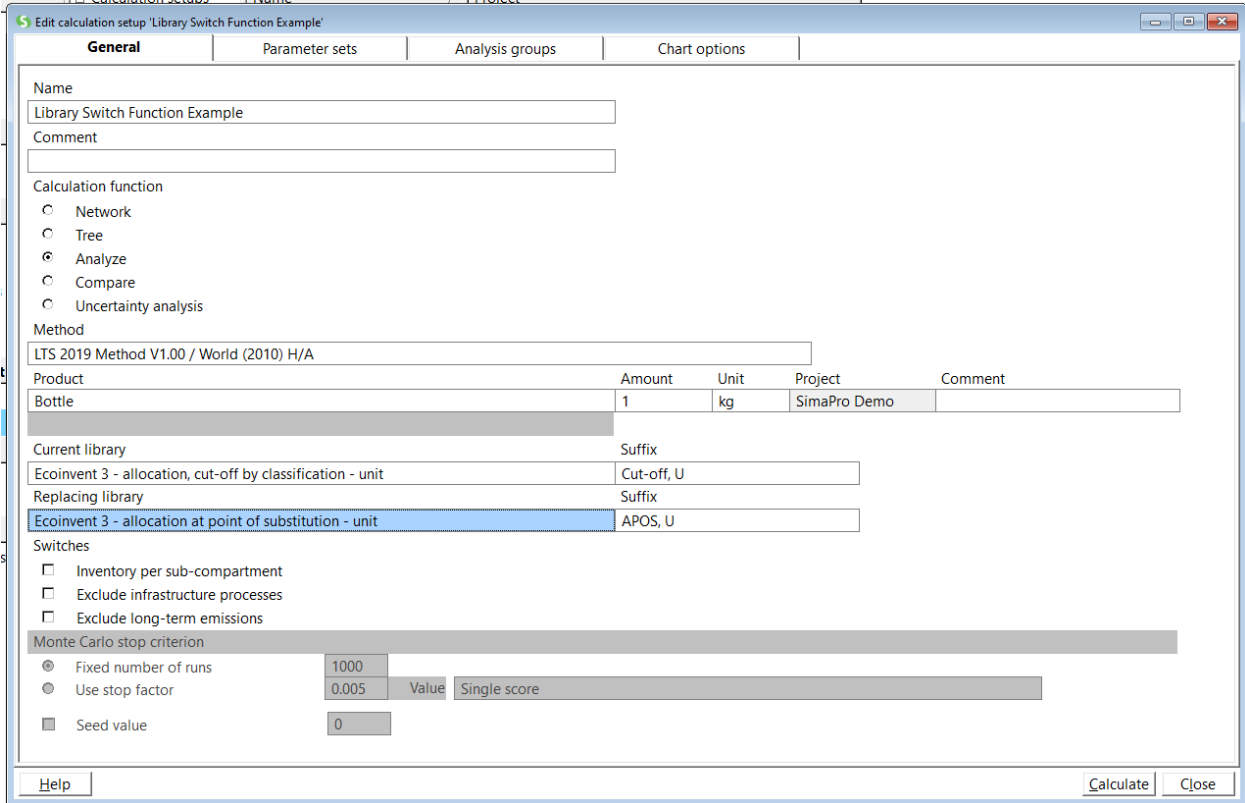


The screenshot shows the 'Edit calculation setup' dialog box for 'Library Switch Function Example'. The 'General' tab is active. The 'Current library' field is highlighted in blue. A 'Select a project' dialog box is open, displaying a list of projects with columns for Name, Type, and Protection. The project 'Ecoinvent 3 - allocation, cut-off by classification - unit' is selected.

Name	Type	Protection
Agri-footprint - economic allocation	Library project	
Agri-footprint - gross energy allocation	Library project	
Agri-footprint - mass allocation	Library project	
Ecoinvent 3 - allocation at point of substitution - system	Library project	
Ecoinvent 3 - allocation at point of substitution - unit	Library project	
Ecoinvent 3 - allocation, cut-off by classification - system	Library project	
Ecoinvent 3 - allocation, cut-off by classification - unit	Library project	
Ecoinvent 3 - consequential - system	Library project	
Ecoinvent 3 - consequential - unit	Library project	
ECOD	Library project	

Converted ecoinvent 3.5 data as unit processes, with links to other processes. Compiled November 2018.

- Next, double click below “Replacing library” and select the library you would like to use instead (e.g. Ecoinvent, allocation at point of substitution - unit).



**Edit calculation setup 'Library Switch Function Example'**

**General** | Parameter sets | Analysis groups | Chart options

Name  
Library Switch Function Example

Comment

Calculation function  
 Network  
 Tree  
 Analyze  
 Compare  
 Uncertainty analysis

Method  
LTS 2019 Method V1.00 / World (2010) H/A

Product	Amount	Unit	Project	Comment
Bottle	1	kg	SimaPro Demo	

Current library  
Ecoinvent 3 - allocation, cut-off by classification - unit | Suffix | Cut-off, U

Replacing library  
Ecoinvent 3 - allocation at point of substitution - unit | Suffix | APOS, U

Switches  
 Inventory per sub-compartment  
 Exclude infrastructure processes  
 Exclude long-term emissions

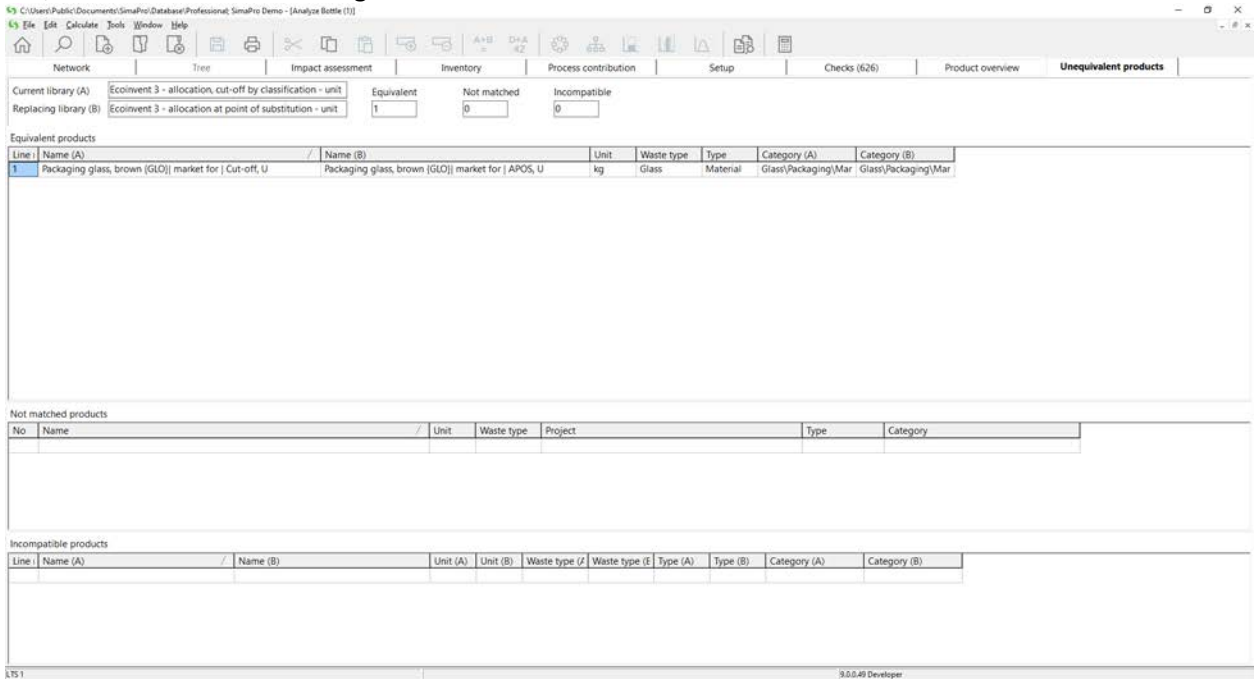
Monte Carlo stop criterion  
 Fixed number of runs | 1000  
 Use stop factor | 0.005 | Value | Single score  
 Seed value | 0

Help | Calculate | Close

- Then, click “Calculate.”

**NOTE: This function ONLY switches the data for THIS calculation.**

- To view what processes were replaced (AKA Equivalent products), click on the “Unequivalent products” tab, which will look something like this:



The screenshot shows the SimaPro software interface with the 'Unequivalent products' tab selected. The interface includes a menu bar (File, Edit, Calculate, Tools, Window, Help) and a toolbar with various icons. Below the toolbar, there are several data tables and input fields.

Current library (A): Ecoinvent 3 - allocation, cut-off by classification - unit  
 Replacing library (B): Ecoinvent 3 - allocation at point of substitution - unit

Equivalent: 1, Not matched: 0, Incompatible: 0

Equivalent products table:

Line	Name (A)	Name (B)	Unit	Waste type	Type	Category (A)	Category (B)
1	Packaging glass, brown (GLO) market for   Cut-off, U	Packaging glass, brown (GLO) market for   APOS, U	kg	Glass	Material	Glass(Packaging)Mar	Glass(Packaging)Mar

Not matched products table:

No	Name	Unit	Waste type	Project	Type	Category

Incompatible products table:

Line	Name (A)	Name (B)	Unit (A)	Unit (B)	Waste type (A)	Waste type (B)	Type (A)	Type (B)	Category (A)	Category (B)

At the bottom left, it says 'LTS 1' and at the bottom right, it says '9.0.0.49 Developer'.

**NOTE: This will also show what products were not matched and incompatible products. You can copy this list (Edit/copy) and paste into a word document or email.**